

J. W. Pepper Cornets

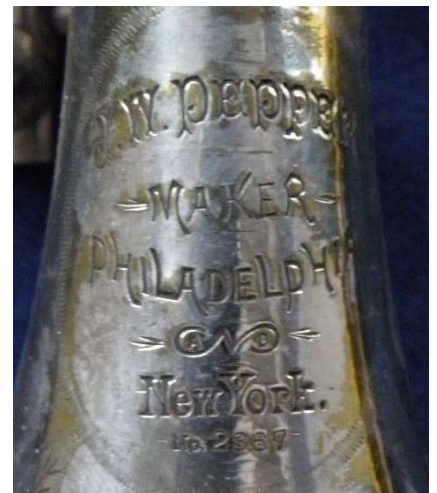
Philadelphia – New York - Chicago

- 1876 James W. Pepper starts a music publishing business in Philadelphia (Pepper).
- 1881 Pepper opens a branch in New York at #294 Bowery at Henry Moennig's shop (the earliest *NY Clipper* ad I found was from August).
- 1882 Instrument maker Henry Distin moves to Philadelphia from New York after March of 1882 to supervise construction of a new factory to be built for Pepper next to their store at 8th & Locust Streets.
- 1883 Pepper opens his instrument factory on June 1st. Early examples of cornets are marked "Distin for Pepper" and have serial numbers as low as #1210. #2307 at top right is an early example from the factory. #2367 (photo 3) shows the early bell marking.

#2262



#2418 c.1884 (below & photo 4)



1883 Pepper also started importing cornets with numbers starting at around 5000. Using comparisons of bell markings, I have assumed that Pepper used a separate serial number sequence for the imports.

1886 Pepper closes the New York store and opens another in Chicago. This shows up on cornets around serial #4000 on domestic made and #8000 on imports.

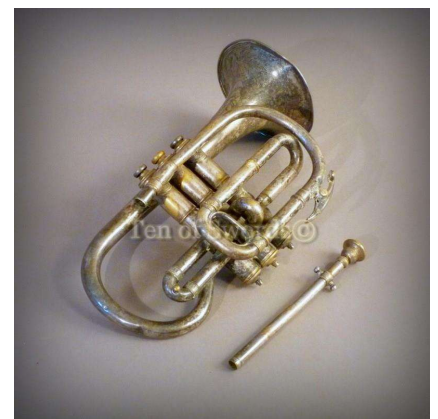
#5083 Superior 1st Class model c.1888



#5382 Specialty model c.1888



#6219 domestic Eb model c.1890



#7227 Superior First Class model c.1892 (author's photos)



#7347 Premier model c.1892 (domestic)

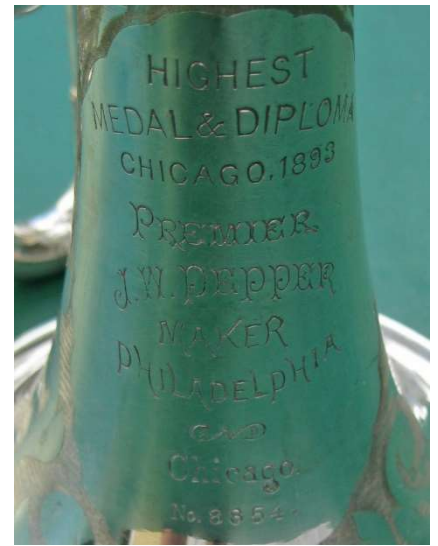


#7554 Superior First Class model showing complete set



1893 Pepper wins an award at the Chicago Expo and starts marking this on the domestic made bells at around 8500.

#8368 Premier model without Expo marking c.1893



#8854 Premier model with Chicago Expo marking and high-end engraving option (author's photos below & top 2 on R)



#9490 Imported model (auction photo below & #3 at R)



c.1887



Imported Pocket Cornet
#13246 c.1890

Imported Eb #13756 c.1890 (auction photos below & top R)



Imported Bb #13982 c.1890; photo 2 at right shows what is probably the maker's mark that I have yet to identify. These are found on many imports (author's photos).



The "Surprise" model import starts showing up around 1892.

Here is #19284 c.1892



Photo 3 at right imported model #23258 c.1897 (auction photo).

Photo 4 is imported model #23554 c.1897 (auction photo). The Chicago store closes in 1897 which lines up with #9100 for domestic models and 23500 for imports.

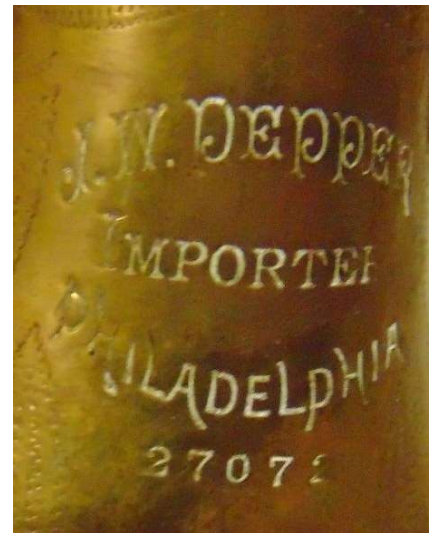
#23554 import c.1897 (auction photo)



Imported model #24712 c.1898 (auction photo)



Imported model #25667 c.1898; below & top right (auction photos)



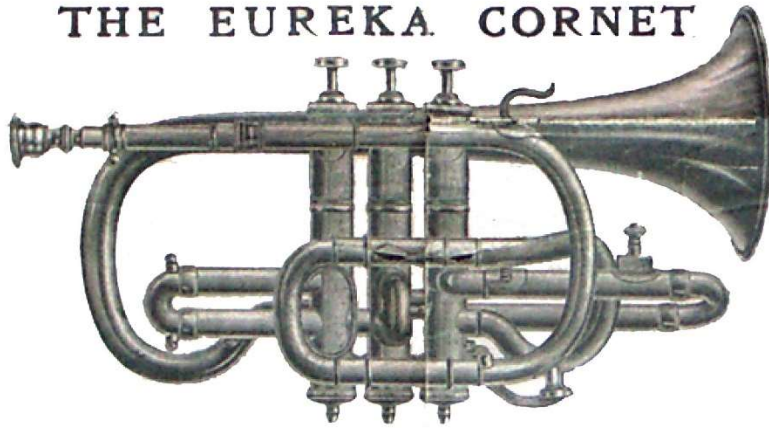
Imported model #27072 c.1898 photo 2 & 3 on right.
Perfected model #30282 c.1899 photo 4 (author's photo).
Domestic Artist's Solo model #10405 c.1899 photo 5 (auction).



1902 A "Surprise" model cornet #36792 is said to be purchased new this year.

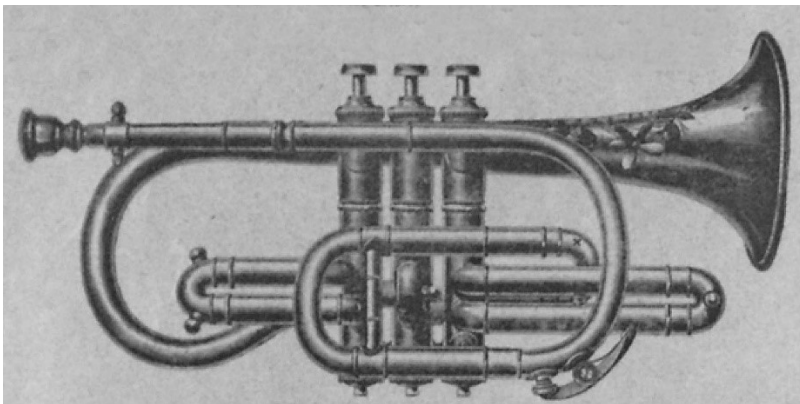
This 1902 catalog image shows the Eureka model made in the Courtois style.

THE EUREKA CORNET

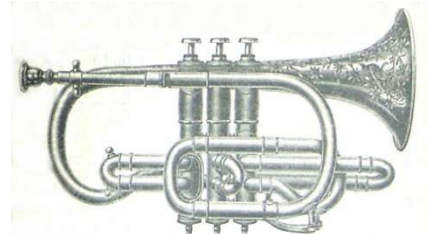
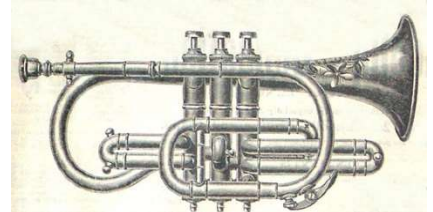
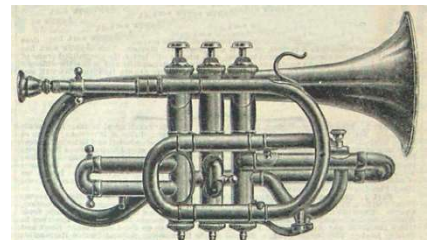
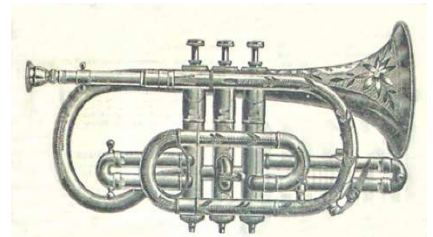
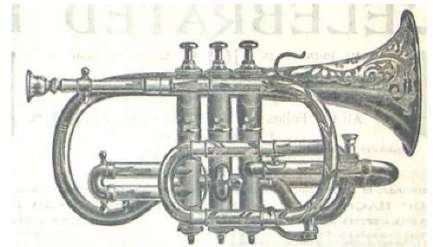
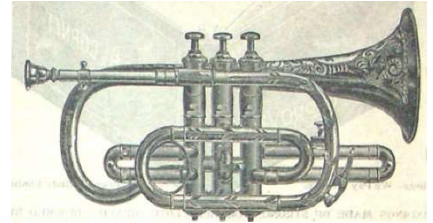
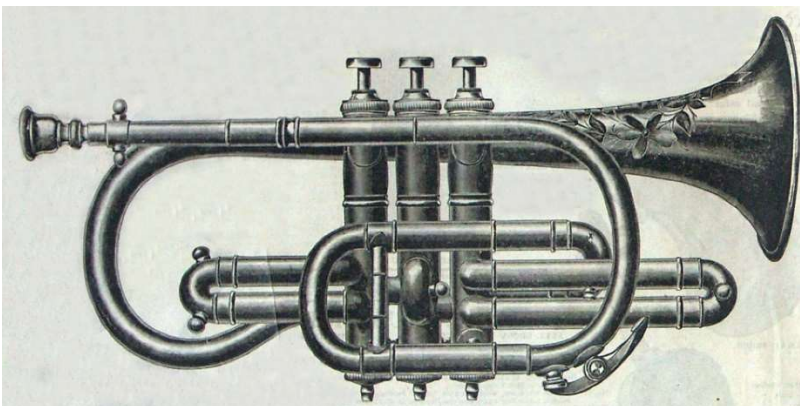


1903 cornets at right are Surprise model with single water key, Surprise model with dual water key, 20th Century Mouchel model, Perfected model, Premier model, & Premier Artist's Solo model.

1903 American Favorite imported model



1903 Premier Specialty domestic model



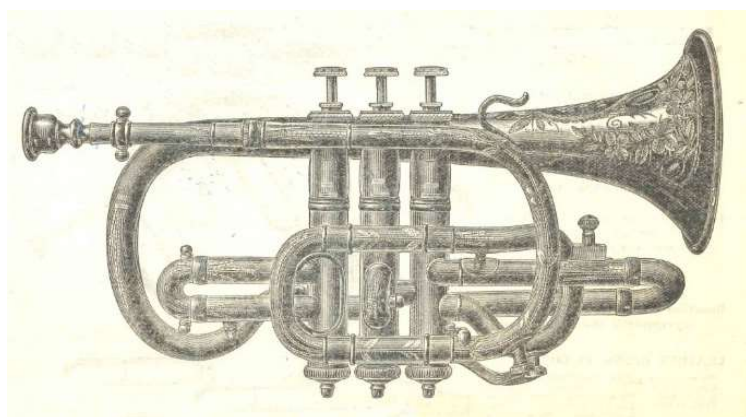
1904 Catalog images

At right are models 20th Century, American Favorite with single water key, American Favorite pocket, Perfected Eb, Perfected Eb Courtois, Premier Artist's Solo, & Premier Specialty.

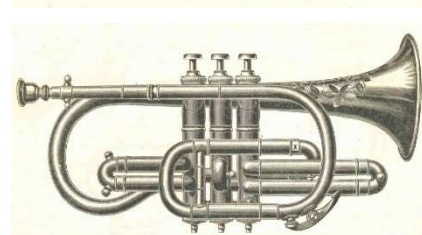
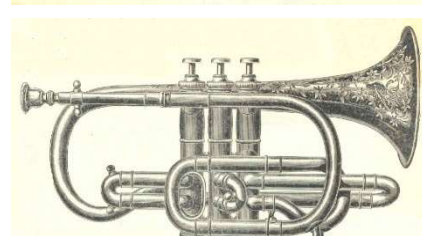
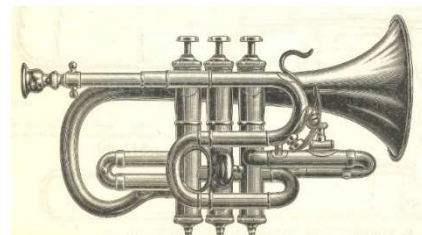
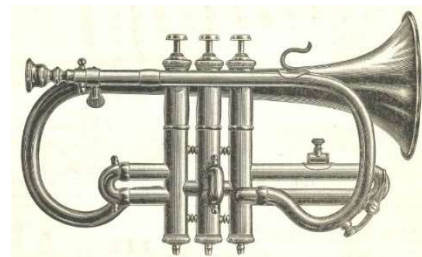
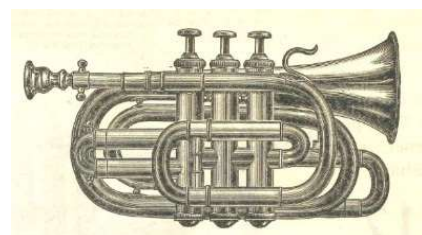
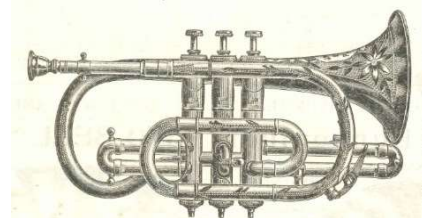
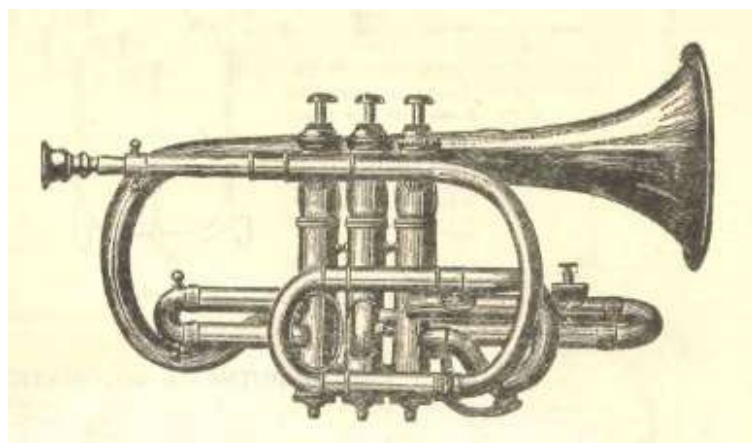
American Favorite #40141 c.1904 (auction photo)



American Favorite



Standard Bb with dual water key

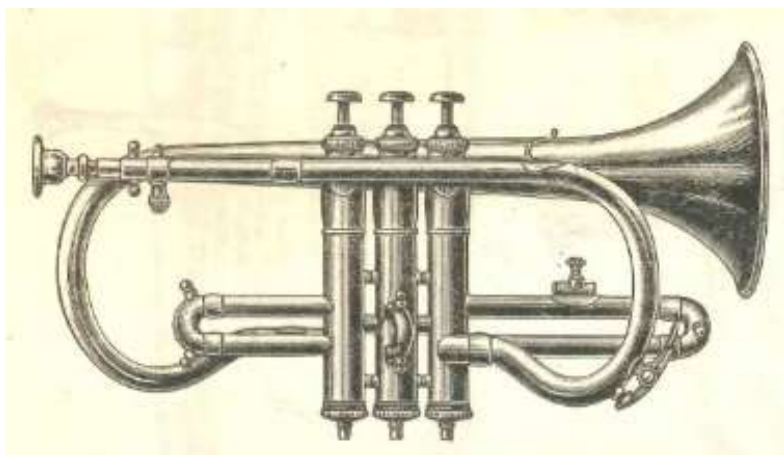


1904 Catalog Images

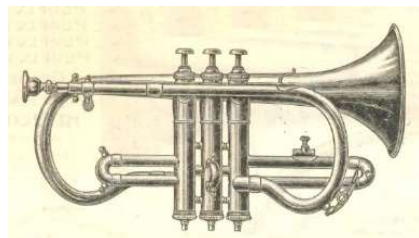
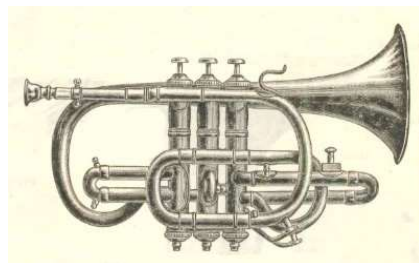
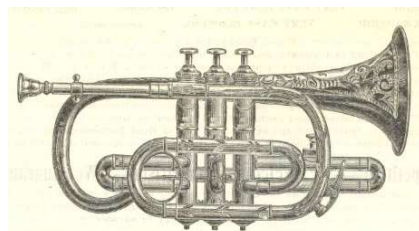
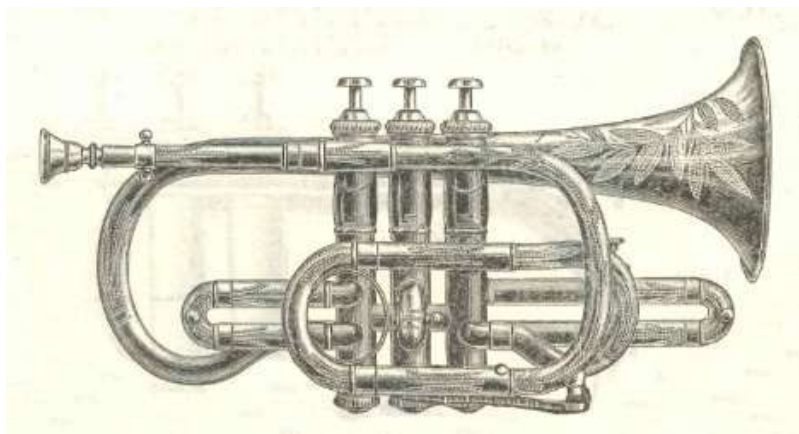
Standard Bb with single water key



Standard Eb



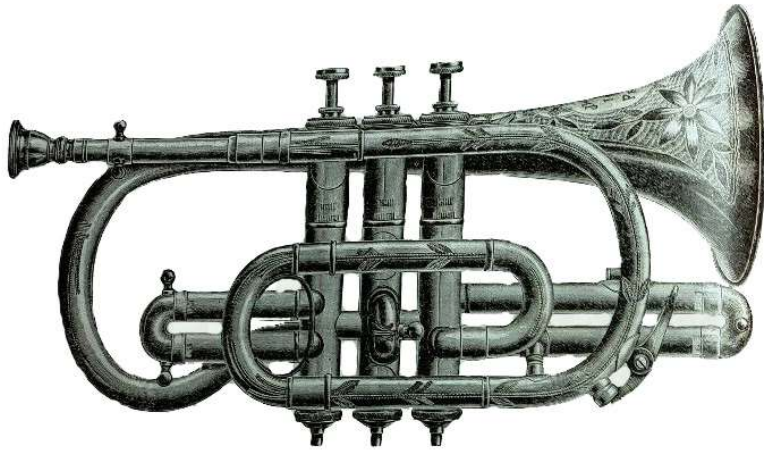
Surprise Bb with dual water key



At right are models Surprise, Victor dual wk, Victor single wk,
Victor Eb, #42061 Victor c.1904, #43666 Surprise c.1905
& #44666 Surprise c.1905.

1907 Catalog images

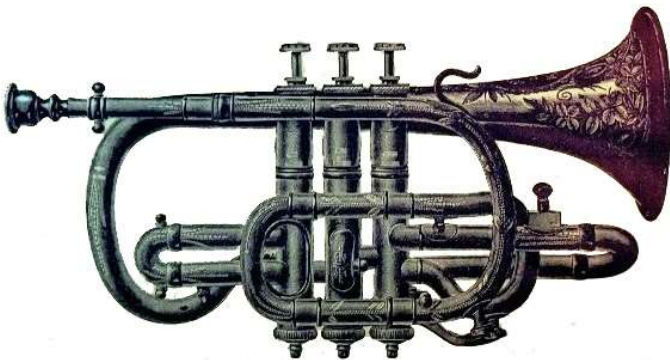
20th Century model



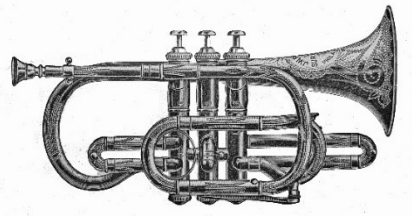
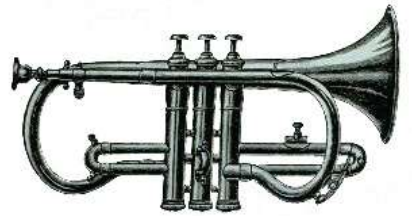
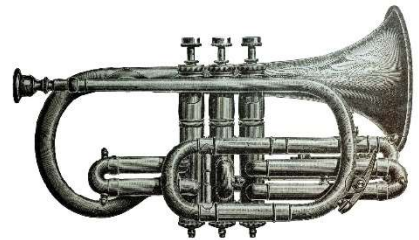
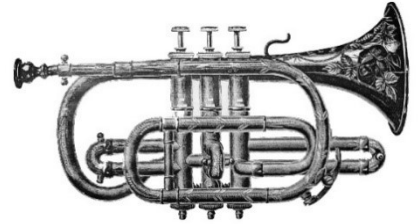
20th Century marked with "6" on the middle valve which is a model made by Bohland & Fuchs of Graslitz, Austria; the largest supplier of imports to the US at this time.



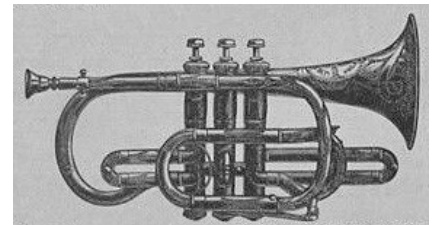
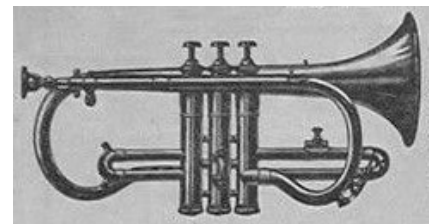
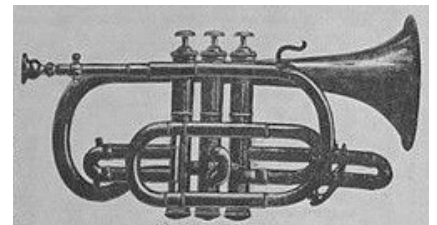
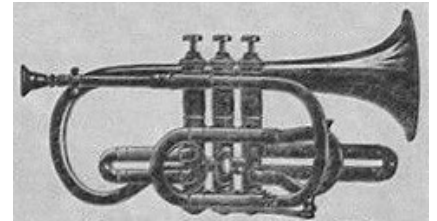
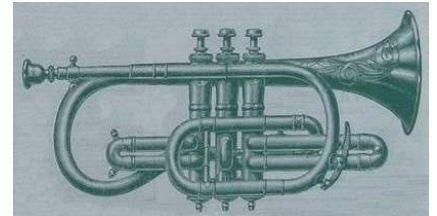
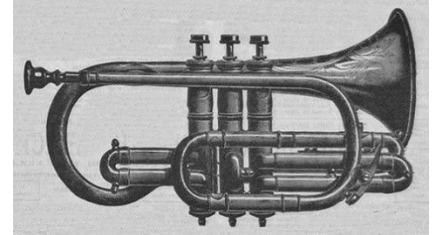
American Favorite model



At right are models American Favorite, Perfect (dwc), Perfect (swk), Premier, Standard (dwc), Standard Eb, & Surprise (dwc).



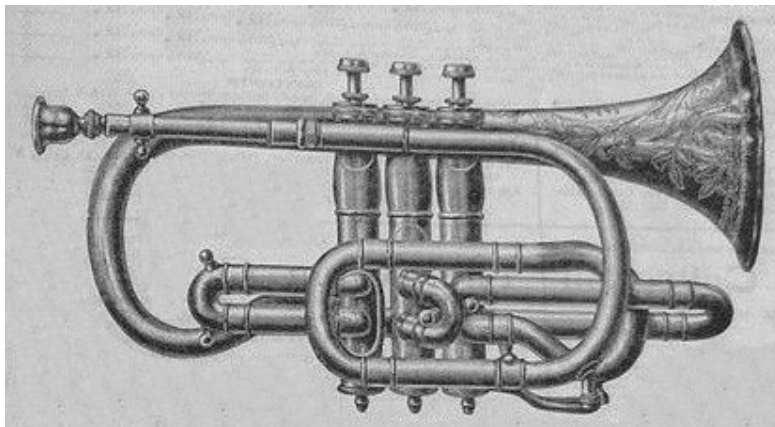
American Favorite model #50336 c.1908 (auction)



Courtiere model #50797 c.1909, below & top r (auction); there is no Paris maker by this name so it's rather another Austrian stencil. The "4" on the middle valve would indicate a B&F model 4 as the true source.

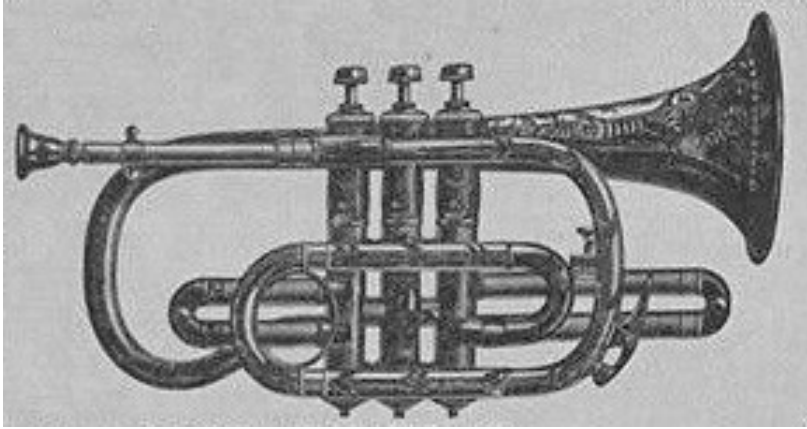


1909 Catalog images
Premier Artist Solo model



At right are Premier, Premier Specialty, Standard (dwc), Standard (swk), Standard Eb, & Surprise (dwc).

1909 Catalog images continued
 Surprise model with single water key



1 & 2 at right are American Favorite models

1910 The company changes to Pepper & Son and all domestic production is ended at around 17000. Imported serial numbers are at 50500.

1912 The Hillyard model ends at around 55300.

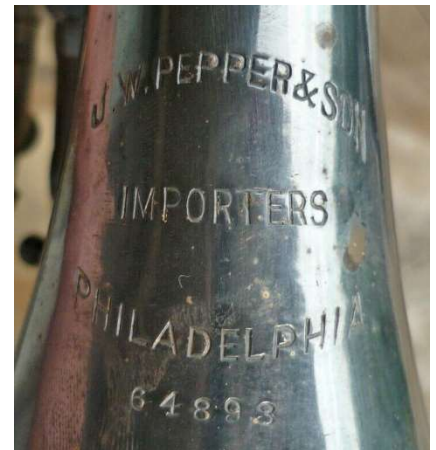
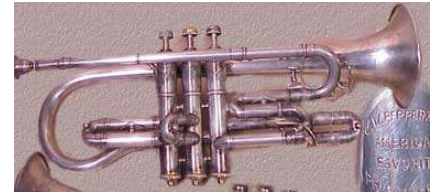
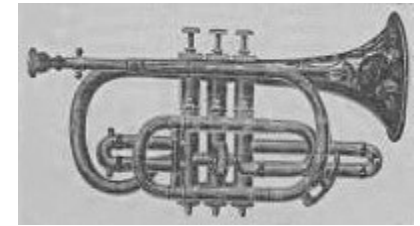
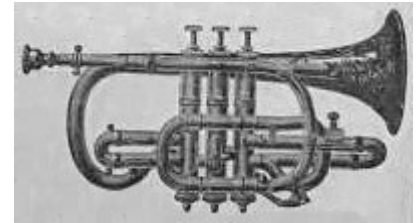
Standard model #59555 c.1915



Perfected model #59646 c.1915; an imported copy of the York Perfec-Tone probably made by B&F.



#3 is American Favorite #62295 c.1916; #4 is #62421; #5 is Standard #64424; #6 & 7 are #64893 and French made (probably Couesnon).



1916 The Courtiere model ends around #61615.

#67045 c.1917 (auction)



Specialty model #68385 c.1917; bell top right (auction)



Surprise model #69828 c.1918 (auction)



#70042 c.1918; the last year of imports

